

TO CONNECT TO THE STORM

It is illegal to connect to the storm drain without a permit. To obtain a storm drain connection permit, contact the City of Lawndale Department of Public Works at (310) 973-3260 Mon-Thurs 7am-6pm .

TO CONNECT TO THE SEWER

Los Angeles County Sanitation District
(562) 699-7411 Ext. 2727

RECYCLING AND HAZARDOUS WASTE INFORMATION

Los Angeles County Dept. of Public Works,
Recycling & Household Hazardous Waste Disposal
1-888-CleanLA (1-888-253-2652) or log on to
www.888CleanLA.com

For more information on storage/disposal of hazardous waste call:
Department of Toxic Substances Control (DTSC)
Duty Officer (818) 551-2830 or log on to
www.dtsc.ca.gov

TO REPORT ILLEGAL DUMPING

| | |
|--|--|
| Public Works Dept. Hours Mon-Thurs 7am-6pm (310) 973-3260 | Non-Business Lawndale Sheriff (310) 219-2750 |
|--|--|

To report illegal discharges or dumping to the storm drain system anywhere in Los Angeles County at any time, call: 1-888-CleanLA (1-888-253-2652)

TO REPORT A CLOGGED STORM DRAIN OR INLET

| | |
|--|--|
| Public Works Dept. Hours Mon-Thurs 7am-6pm (310) 973-3260 | Non-Business Lawndale Sheriff (310) 219-2750 |
|--|--|

To report a clogged storm drain inlet or catch basin anywhere in Los Angeles County at anytime, call:
Los Angeles County Dept. of Public Works
1-800-675-HELP or (626) 458-4357

This brochure is one of a series of brochures describing storm drain protection measures.

Other brochures include:

AUTOMOTIVE MAINTENANCE & CAR CARE
FOOD SERVICE INDUSTRY
LANDSCAPING, GARDENING, AND PEST CONTROL

For more information about storm drain protection or additional brochures, call the



CITY OF LAWDALE
PUBLIC WORKS DEPARTMENT
(310) 973-3260

www.888CleanLA.com



Printed on recycled paper.

The City of Lawndale gratefully acknowledges the City of Los Angeles for brochure concept and design.

Storm Water Pollution Preven-

Painting



Best Management Practices (BMPs)

for

Professional Painters
Dry Wall Crews
Plasterers
Paper Hangers
Floor Covering Installers
General Contractors
Home Builders
Developers
Do-It-Yourselfers

PROBLEMS

Storm Water Pollution -It's Up To Us

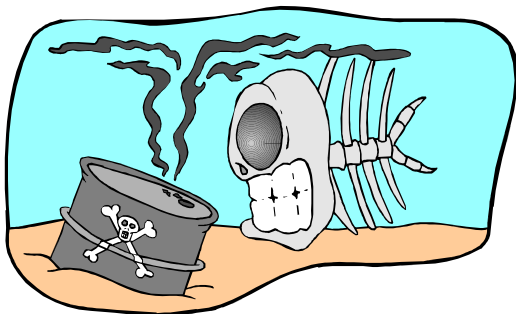
The City of Lawndale has two drainage systems - the sewers and the storm drains. The storm drain system was designed to prevent flooding by carrying excess rainwater away from city streets out to the ocean.

During storms in urban areas, rainwater may mix with pollutants in industrial and household runoff, creating storm water pollution.

Pollution in storm water and urban runoff contaminates streams, rivers and the ocean. Storm water pollution contaminates beaches, harms aquatic life, and increases the risk of inland flooding by clogging gutters and catch basins. Overall, storm water pollution costs the economy of Los Angeles County more than \$26 million per year.

All paints, solvents and adhesives contain chemicals that are harmful to wild life and humans. That is why proper handling and disposal of these products is so important.

It is especially important not to clean brushes in an area where paint residue can flow to a street, gutter, or storm drain. Once paint residue enters the storm drain system, it flows directly to the ocean.



SOLUTIONS

These Best Management Practices (BMPs) will ensure a cleaner ocean and city.

Keep Work Sites Clean

BMPs such as handling, storing, and disposing of materials properly can prevent pollutants from entering the storm drains.

Keep Liquid Products away from Streets

Keep all liquid paint products and wastes away from the street, gutter, and storm drain systems.

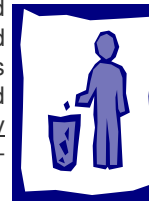
General Business Practice

- Use water-based paints instead of oil-based paints. Look for the words "Latex" or "Cleanup with water" on the label. Don't rinse into storm drains!
- Don't use paints over 15 years old. They may contain toxic levels of lead.



Paint Cleanup

- Liquid residues from oil-based paints, thinners, solvents, glues, and cleaning fluids are hazardous wastes. When thoroughly dry, used brushes, rags, drop cloths and empty paint cans (lids off), may be disposed of as trash.
- Never clean **brushes** or rinse paint containers into a street, gutter, or storm drains.
- For **water-based paints**, paint out brushes to the extent possible, and rinse in the sink.
- For **oil-based paints**, paint out brushes to the extent possible. Clean with thinner and then, filter and reuse thinner or solvent.



Surface Preparation

- Chemical paint stripping residue is a hazardous waste. For disposal information call the Los Angeles County Department of Public Works 1-888-CleanLA (1-888-253-2652).
- Chips and dust from marine paints or paints containing lead or tributyl tin are hazardous wastes and must be properly managed. Dry sweep chips and dust and call Los Angeles County Department of Public Works. 1-888-CleanLA (1-888-253-2652) for disposal information.
- Paint chips and dust from non-hazardous dry stripping and sand blasting may be swept up and disposed of as trash.
- When stripping or cleaning building exteriors with high-pressure water, block storm drains. Wash water onto dirt areas or collect by mopping or vacuuming. Check with the local wastewater treatment authority to find out if building cleaning water can be disposed in the sanitary (not storm) sewer.

Recycle or Reuse Leftover Paints

- Reuse leftover paint for touch-ups or donate it to local graffiti paint-out programs.
- For additional recycling options call Los Angeles County Department of Public Works at 1-888-CleanLA (1-888-253-2652).

